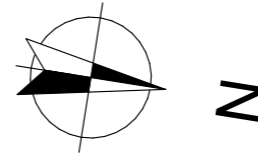


LES BORÉALES

DE SAINT-PRYVÉ



Valloire Habitat

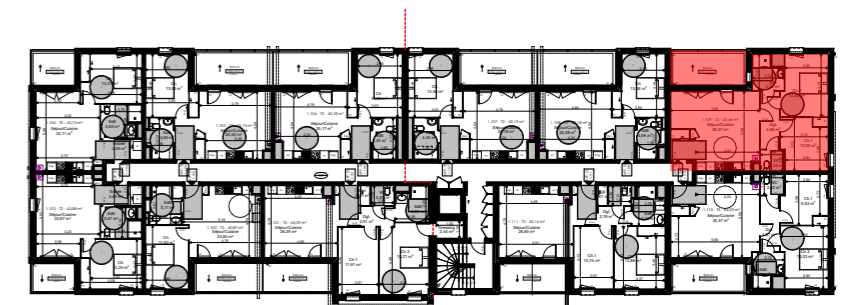
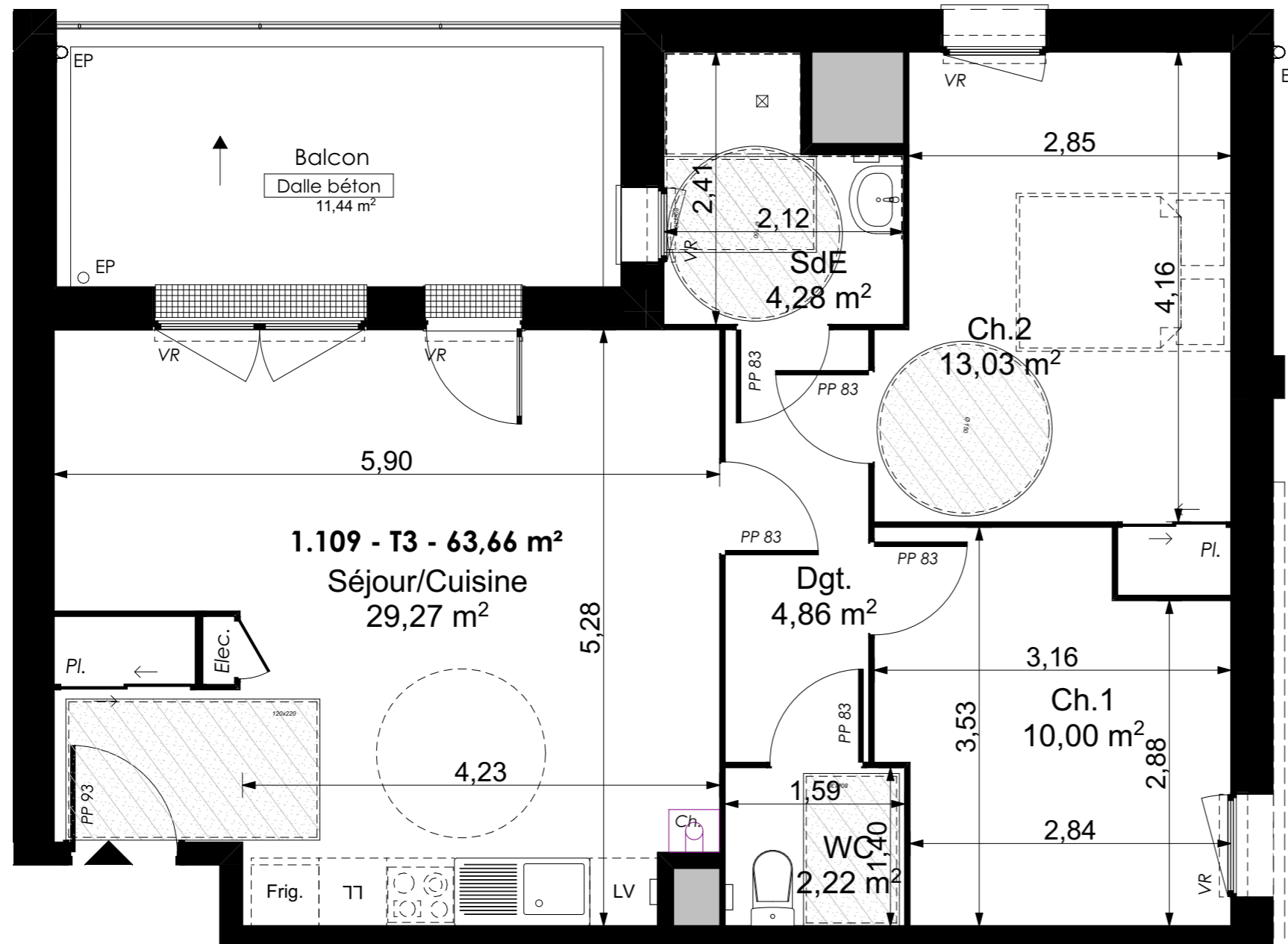
Groupe ActionLogement

28 bis rue du Gros Raisin
45750 SAINT-PRYVE-SAINT-MESMIN

Les BoRéales de Saint-Pryvé

TYPE T3 - LOGEMENT 1-109
R+1

Séjour/Cuisine	29,27 m ²
Dgt	4,86 m ²
WC	2,22 m ²
SdB	4,28 m ²
Ch. 1	10,00 m ²
Ch. 2	13,03 m ²
Total surfaces habitables 63,66 m ²	
Annexes	Surf. Utile
Balcon	11,44 m²
Total surfaces Annexes	11,44 m ²
TOTAL SURFACES 75,10 m²	



15/11/2022

Indice C

Ech : 1:50

0.00 0.50 1.00 2.00 3.00

